

# PLANT ON 28

MOULDING # **PL 28**

CUSTOMER: \_\_\_\_\_

COMMENTS: \_\_\_\_\_

[HOME](#)

[PROFILE CATALOG](#)

[CUSTOM KNIVES](#)

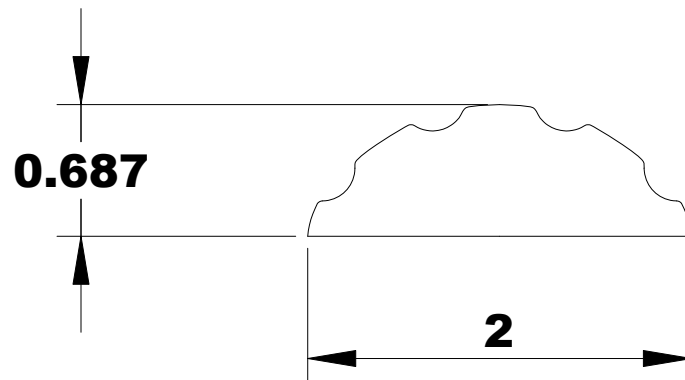
[ORDER](#)

[TOOLING](#)

2 X 11/16 PLANT ON 28

PLANT ON 28S ARE A VERSATILE MOULDING THAT CAN BASICALLY GO ANYWHERE. IT CAN BE USED TO FRAME PANELS, OR AS A BASE CAP ON TOP OF S4S. USE IN AN ARCHITRAVE BUILD UP, OR AS A SMALL SOLID CROWN. YOU CAN EASILY ADD VISUAL INTEREST ANYWHERE THE DESIGN DEMANDS. TRY OUR SUPER LONG WEARING CORRUGATED MOULDER STEEL. IT LAST 2 1/2 TIMES LONGER THAN STANDARD M2 ALLOY. GREAT FOR EXTENDED RUNS IN HARDWOODS.

INSIDE OF MACHINE ( FENCE )



OUTFEED VIEW COMING