

# MITERED CABINET DRAWER FRONT 7

MOULDING # **MC DF7**

CUSTOMER: \_\_\_\_\_

COMMENTS: \_\_\_\_\_

[HOME](#)

[PROFILE CATALOG](#)

[CUSTOM KNIVES](#)

[ORDER](#)

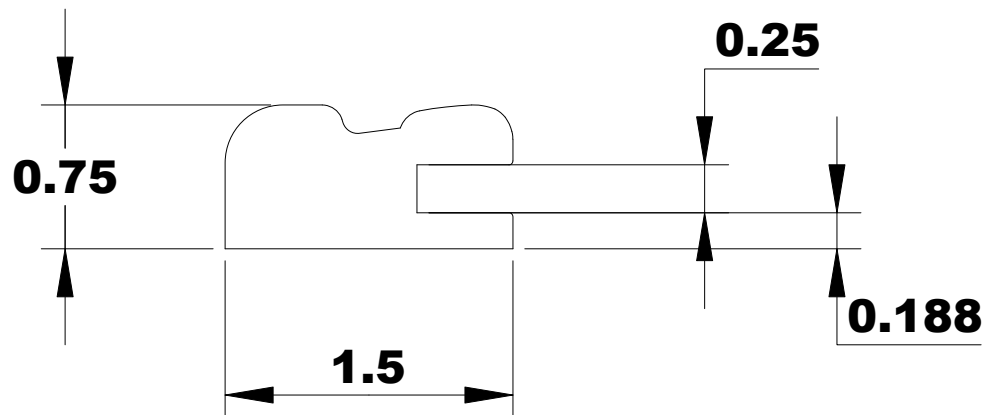
[TOOLING](#)

A smaller version of MC 7, MC DF7 adds a perfectly matched drawer front to your kitchen. This design adds a sleek modern appearance in many themes. A 1.5" width will allow a drawer in the tightest of spaces.



Can we change the width? Of course we can. Add this or subtract that, no problem. We make custom moulding knives just as quickly as stock profiles. All in just 1-2 days usually.

INSIDE OF MACHINE ( FENCE )



OUTFEED VIEW COMING