

CHAIR RAIL 27

MOULDING # **CH 27**

CUSTOMER: _____

COMMENTS: _____

[HOME](#)

[PROFILE CATALOG](#)

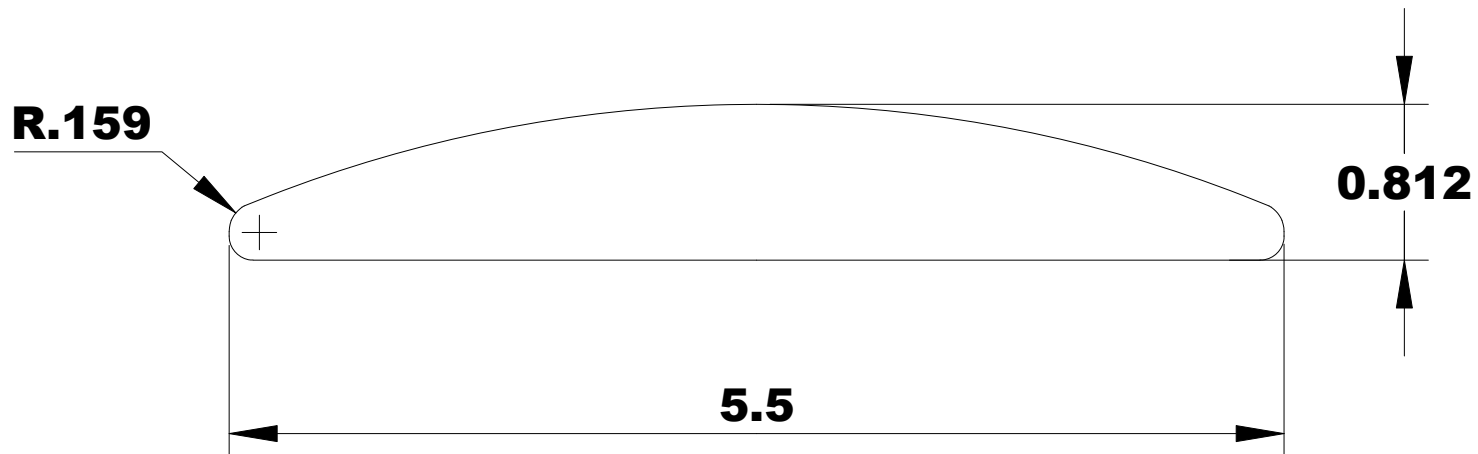
[CUSTOM KNIVES](#)

[ORDER](#)

[TOOLING](#)

5 1/2 X 13/16 CHAIR RAIL 27
ADD ELEGANCE TO ANY SITTING ROOM WITH
HIGH QUALITY SHAPER KNIVES AND MOULDING
CUTTERS. HIGH SPEED STEEL KNIFE SETS MADE
QUICKLY TO DEMANDING SPECIFICATIONS.

INSIDE OF MACHINE (FENCE)



OUTFEED VIEW COMING